

# Obesity is a Disease

Obesity is a multifactorial disease which negatively impacts many other conditions and diseases in patients. Anyone who is overweight is at risk for obesity and can benefit from medical treatment.

Diseases are disorders that occur and can often be improved with treatment. Disease is not your fault.

## What is It?

The Medical Weight Loss program at ReforMedicine is an effective and affordable medical treatment for the disease of obesity.

An eating plan is part of the medical treatment program which considers a patient's total health and manages any other related health conditions along the way.

## Who Can Participate?

The Medical Weight Loss Treatment Program at ReforMedicine is designed for adults 18 and older. This is a medical treatment and is appropriate for anyone with any medical condition(s). Most patients have more than 20 pounds to lose all the way up to 300 pounds or more.



## Learn More

If you would like to learn more about the program or begin the program, please plan to attend a **free information session.**

Get the latest dates, times, and locations by visiting **[www.ReforMedicine.com/cfausd](http://www.ReforMedicine.com/cfausd)** or by calling the Cardinal Healthy office at **715-738-2700.**



# Individual MEDICAL WEIGHT LOSS Treatment Program



### Cardinal Healthy Clinic

140 West Elm Street | Chippewa Falls, WI 54729  
[www.ReforMedicine.com/CFAUSD](http://www.ReforMedicine.com/CFAUSD) | 715-738-2700

### Corporate office

3004 Golf Road | Eau Claire, WI 54701  
[www.ReforMedicine.com](http://www.ReforMedicine.com) | 715-514-2827

Pricing subject to change without notice. Rev. 1/2020



Powered by ReforMedicine

# Our Expert Team

ReforMedicine Medical Weight Loss providers and support staff have specialized training in obesity medicine.



## Renee Carlson, MSN, FNP-C, ANP-C, APNP

- Board Certified Family Nurse Practitioner and Adult Nurse Practitioner
- Obesity Medicine Specialist
- Earned a Certificate of Advanced Education in Obesity Medicine
- Member of the Obesity Medicine Association



## Tom Joles, M.D.

- Board Certified Physician
- Obesity Medicine Specialist
- Certificate of Advanced Education in Obesity Medicine in process



## Kristine Greener, BS, CHES®

- Certified Health Coach
- Certified Health Education Specialist
- Health & Wellness Specialist

## Medical Weight Loss Program Details Specific to Cardinal Healthy

### Pricing

#### Cardinal Healthy Members:

- Initial Visit: \$200 (Patient pays at time of enrollment)
- Monthly Provider Visits: \$25 (Patient pays at time of appointment)
- Health Coach visit in between provider visits: Included at no charge

### Providers & Appointments

All appointments will take place at the Cardinal Healthy Clinic with

- Renee Carlson, FNP-C, ANP-C, APNP, Medical Weight Loss Specialist
- Tom Joles, MD, Medical Weight Loss Specialist
- Kristine Greener, BS CHES® Certified Health Coach and Certified Health Education Specialist

### No Hidden Fees

- The treatment includes a grocery store foods-based eating plan
- There are no other foods or supplements you need to buy

## How Does it Work?

ReforMedicine's Medical Weight Loss is a medical program designed to treat the disease of obesity.

The program includes medical treatment based upon the outcomes of a complete health history, lab tests, body composition analysis, and a targeted physical exam. Our Medical Weight Loss Specialists meet as a team to review all new cases, then prescribe a specific plan for effective weight loss that works with your individual needs.

Treatment will include regular visits with your provider and health coach. It may include new medication or adjustments to existing medications. It will include education about how to properly fuel your body to promote fat burning.

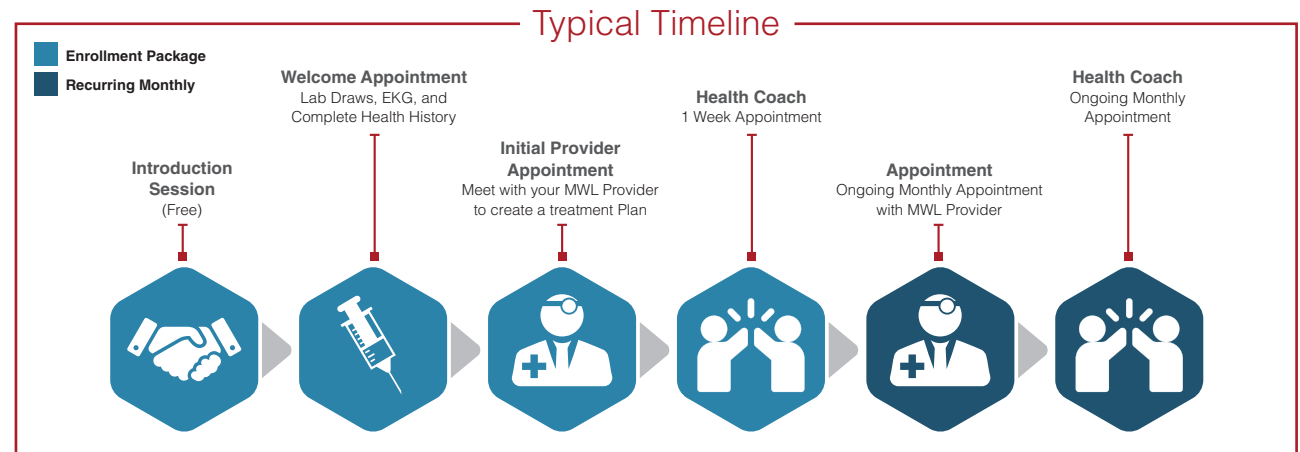
The treatment program is highly effective and sustainable as a way of life to maintain weight loss.

**Obesity is a chronic disease.** ReforMedicine providers will continue to see and work with you for as long as you need to adequately control your weight.



## What is the Investment?

The Enrollment Fee (see pricing at left) is due in full at the time of enrollment. This will include your Welcome Appointment (labs, EKG, medical screenings, education), Initial Provider Appointment, and 3 sets of labs (initial, at 10% weight loss, and at the best achieved weight). All health coaching visits are included while you are active in this program.



Once the enrollment period is complete, Medical Weight Loss program participants will have a monthly Medical Weight Loss Provider appointment (see pricing at left) and a Monthly Health Coach appointment (no charge during active weight loss).

If you choose medical weight loss prescription medications the cost for these will be additional and begin at \$15 per month. Once you are nearing your goal weight, the Medical Weight Loss staff will work with you to make a long term plan for ongoing success.

### Price Comparison

- \*Compare this to purchasing the services individually at ReforMedicine would be \$1,900
- \*Compare this to standard cost at other medical facilities in the community would be over \$4,000